

# SOLIHULL JUNIOR SCHOOL

7+ ENTRANCE EXAMINATION

MATHEMATICS

SAMPLE PAPER 1



# SOLIHULL

# SOLIHULL SCHOOL 7+ SAMPLE PAPER

## MATHEMATICS

Time 45 minutes

Answer all the questions in the spaces provided. Make sure that your answers are clear. You may use the spaces around each question to do your working out. If you cannot do a question, leave it and go on to the next.

1. Write these numbers in figures:

a. Fifty eight

\_\_\_\_\_

b. Two hundred and seventeen

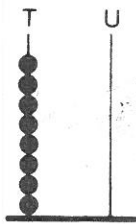
\_\_\_\_\_

c. Eight hundred and five

\_\_\_\_\_

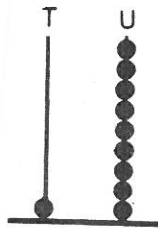
2. Write the number shown on these abacus pictures.

a.



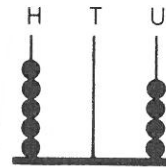
\_\_\_\_\_

b.



\_\_\_\_\_

c.



\_\_\_\_\_

3. Using the digits 2, 5 and 4, write down:

a. The largest number you can make

\_\_\_\_\_

b. The smallest number you can make

\_\_\_\_\_

4. Fill in the missing numbers:

2	4	6			
15		25	30		
101	102		104		

5. a.  $82 + 1 = \underline{\hspace{2cm}}$       b.  $99 + 1 = \underline{\hspace{2cm}}$

c.  $329 + 1 = \underline{\hspace{2cm}}$       d.  $56 + 10 = \underline{\hspace{2cm}}$

e.  $325 + 10 = \underline{\hspace{2cm}}$       f.  $401 + 10 = \underline{\hspace{2cm}}$

g.  $119 + 100 = \underline{\hspace{2cm}}$       h.  $526 + 100 = \underline{\hspace{2cm}}$

6. a. Circle the even numbers:

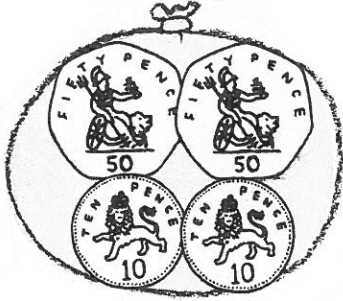
8      11      15      16      17      18

b. Circle the odd numbers:

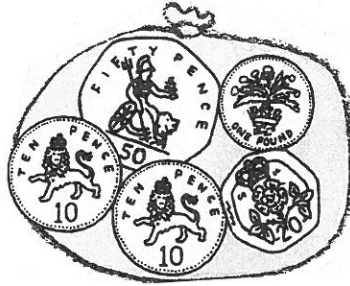
5      6      8      11      13      16

7. Write down how much money is in each purse:

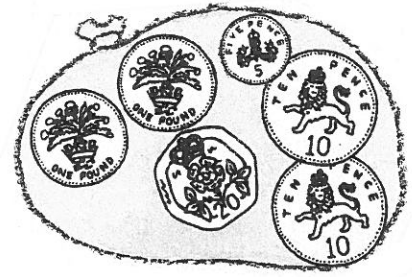
a.



b.



c.



8. John has 10p. If he spends 3p and 5p how much change will he get?

\_\_\_\_\_

9. Lucy bought a pencil for 42p and a rubber for 25p.

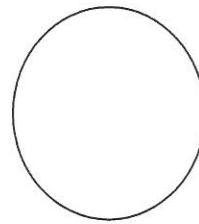
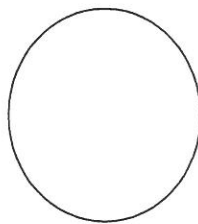
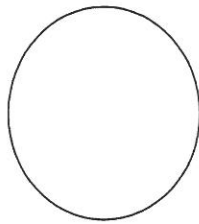
a. How much money did she spend?

\_\_\_\_\_

b. How much change would she get from £1?

\_\_\_\_\_

10. Which 3 coins make up 9p?



11. Work out these additions:

a.  $12 + 3 =$  \_\_\_\_\_

b.  $48 + 24 =$  \_\_\_\_\_

c. 
$$\begin{array}{r} 52 \\ + 14 \\ \hline \end{array}$$

\_\_\_\_\_

d. 
$$\begin{array}{r} 75 \\ + 23 \\ \hline \end{array}$$

\_\_\_\_\_

12. Work out these subtractions:

a.  $18 - 9 =$  \_\_\_\_\_

b.  $68 - 12 =$  \_\_\_\_\_

c. 
$$\begin{array}{r} 49 \\ -27 \\ \hline \end{array}$$

d. 
$$\begin{array}{r} 54 \\ -19 \\ \hline \end{array}$$

13. a. 3 lots of 3 = \_\_\_\_\_

b. 6 lots of 2 = \_\_\_\_\_

c.  $4 \times 2 =$  \_\_\_\_\_

d.  $5 \times 3 =$  \_\_\_\_\_

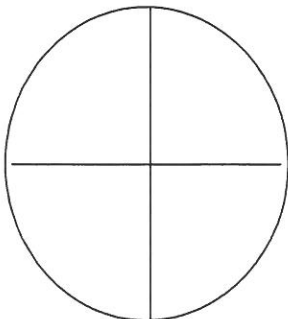
14. a. Share 12 sweets between 4 children. \_\_\_\_\_

b. Share 9 bones between 3 dogs. \_\_\_\_\_

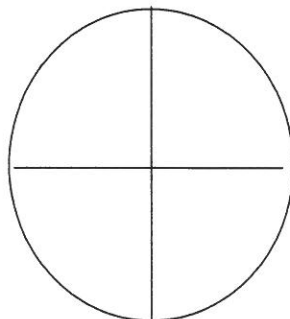
c.  $8 \div 2 =$  \_\_\_\_\_

d.  $10 \div 5 =$  \_\_\_\_\_

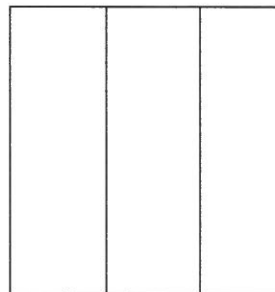
15. Colour in the fractions of these shapes.



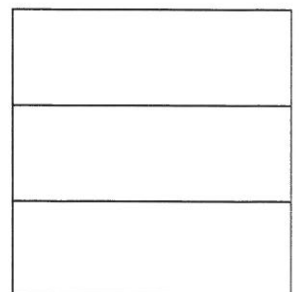
Colour  $\frac{1}{2}$



Colour  $\frac{1}{4}$

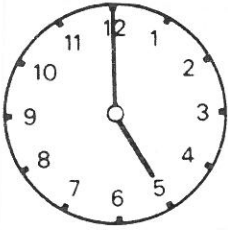


Colour  $\frac{2}{3}$

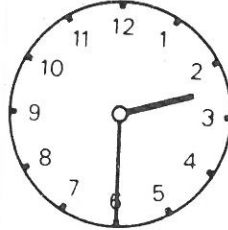


Colour  $\frac{1}{3}$

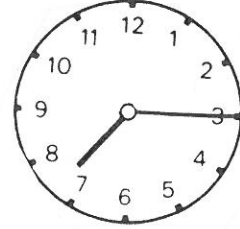
16. Write the time shown on these clocks:



\_\_\_\_\_



\_\_\_\_\_



\_\_\_\_\_

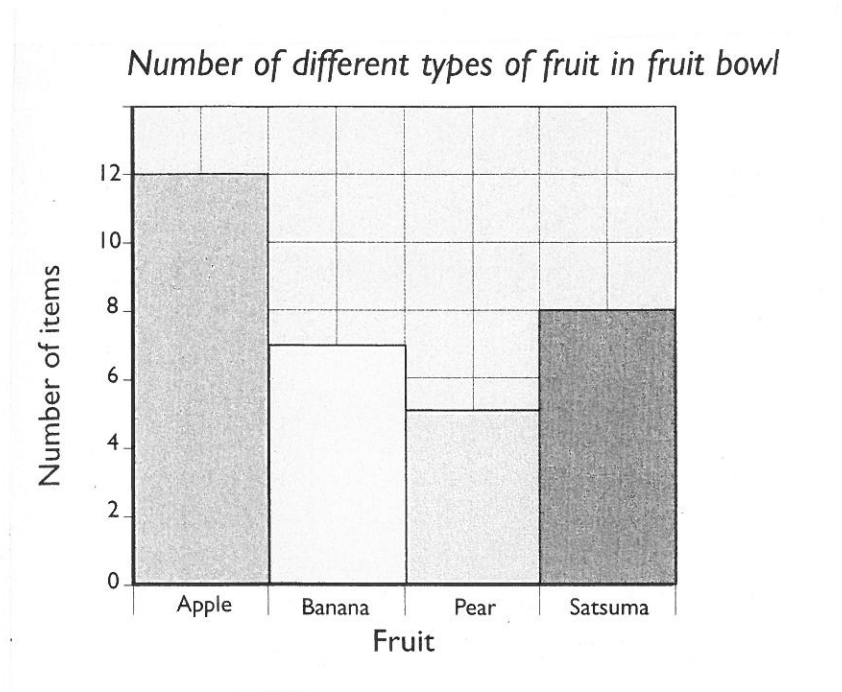
17. How many minutes in half an hour? \_\_\_\_\_ minutes

18. Which of these shapes is:



- a. a square
- b. a circle
- c. a triangle

19. Look at the Bar Chart and answer the questions.



- a. Which is the most popular fruit? \_\_\_\_\_
- b. How many bananas are there? \_\_\_\_\_
- c. How many more apples than satsumas are there? \_\_\_\_\_
- d. How many items of fruit are there in the bowl? \_\_\_\_\_

*If you finish before the 45 minutes is up, go back and check your work.*